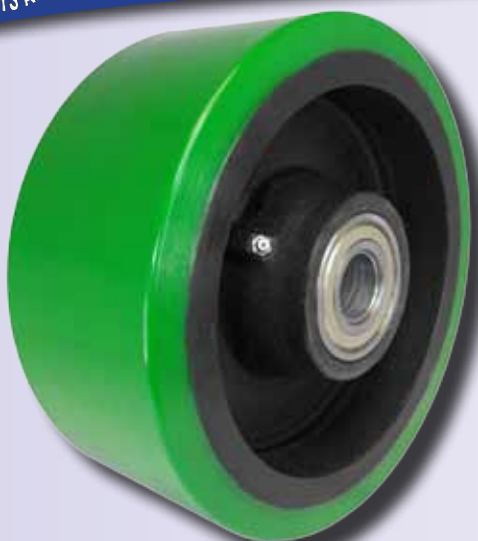




Wheels: ULTRA-POLY®

Durable Superior Casters®



- 3/4" Thick ultra strong polyurethane elastomer tread chemically bonded to a solid heavy-duty cast iron core.
- Combination of thick tread and heavy core, offers higher weight capacities and provides greater durability than other mold on polyurethane tread wheels.
- Optional precision ball bearings and tapered roller bearings offer higher weight capacities and require less effort to start up and maintain a rolling load.
- Provides excellent floor protection and quiet rolling operation.
- Color: Green on black.
- Durometer: 50 Shore D (+/-5).
- Temperature range: -40° F to 180° F.

Wheel Diameter	Tread Width	Hub Length	Load Capacity	Part Number	Replace ** with desired bearing code.			
					Plain Bore	Roller Bearings	Precision BB	Tapered Bearings
6	3	3-1/4	3000	EX60LG**	85	24,26	65,67	70,71
8	3	3-1/4	3500	EX80LG**	85	24,26	65,67	70,71
8	4	4-1/4	4000	EX80NG**	86	31,33	68	71,74
10	3	3-1/4	4000	EX10LG**	85	24,26	65,67	70,71
10	4	4-1/4	5500	EX10NG**	86	31,33	68	71,74
12	3	3-1/4	5000	EX12LG**	85	24,26	65,67	70,71
12	4	4-1/4	6500	EX12NG**	86	31,33	68	71,74

Bore & Bearing Sizes													
Bearing or Bore Code	24	26	31	33	65	67	68	70	71	74	85	86	92
Bearing or Bore Type	Roller Bearings			Sealed Precision BB			Tapered Bearings			Plain Bore		3/4 Roller w/Stl. Bushing	
Inner Diameter	1	1-1/4	1-1/4	33	3/4	1	1	3/4	1	1-1/4	1-15/16	2-7/16	1/2

Wheels: CHAMPION™

NEW!



- 1-3/16" Thick ultra-flex compound polyurethane elastomer tread chemically bonded to a mag style aluminum core, sets a new standard in high quality wheels; maximizing load capacity, shock load, and vibration stabilization.
- Combination of the thick ultra-flex tread and oversized sealed precision ball bearings minimizes rolling resistance.
- Elastic properties of ultra-flex tread provide excellent abrasion resistance and a cushioned ride that easily rolls over debris and small obstructions (metal shavings, electrical cords, floor joints, etc), offers maximum floor protection, high impact strength and ultra quiet rolling operation.
- Great for manual or power assisted applications.
- Color: Green
- Durometer: 70 Shore A (+/-5).
- Temperature range: -40° F to 180° F.

Wheel Diameter	Tread Width	Hub Length	Load Capacity	Part Number	Sealed Precision Ball Bearings with Top Hat Bushings	Bearing /Top Hat Bushing I.D.
6	2	2-7/16	1200	CP60JN64	64 = 6204	1/2
8	2	2-7/16	1500	CP80JN64		